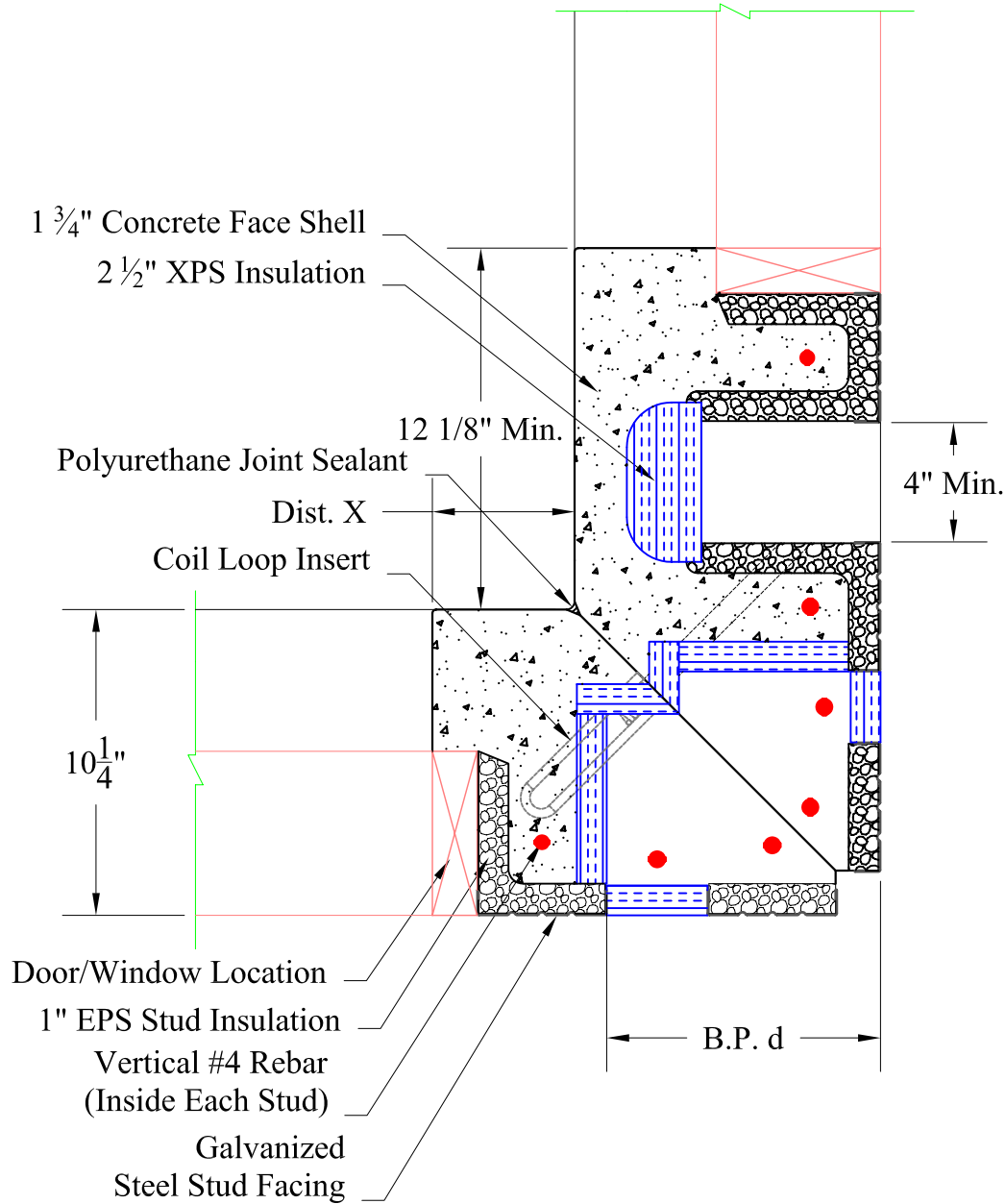


NOTE:

B.P. d = Beam Pocket Depth

Formula For Calculating Dist. X = $4\frac{3}{4}" + (B.P. d - 8\frac{3}{4}")$



937 East Earl Road, New Holland, PA 17557
 Phone: 800-452-9255 / Fax: 717-351-9263

NAME		DATE	PRODUCT LINE: Xi	
DRAWING BY:	NJEI	10/03/07	DESCRIPTION: Inside Corner 45 Deg. (Min. Dist. @ Door/Window < 40 3/4")	
COMMENTS:			SIZE	DWG NO / PART NO:
Non-Symmetrical Beam Pocket Door/Window Located In Both Walls			A	DP0088
			DRAWING SCALE: 0'-2"=1'-0"	PLOT SCALE: 1:6
				REVISION
				00
				SHEET: 1 of 1