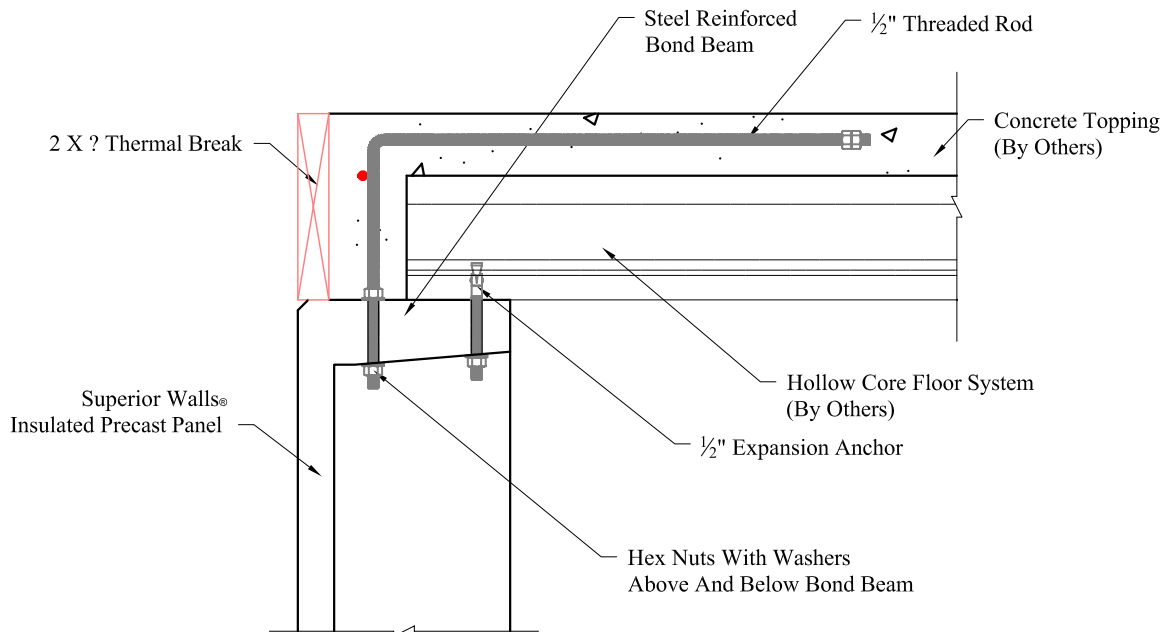


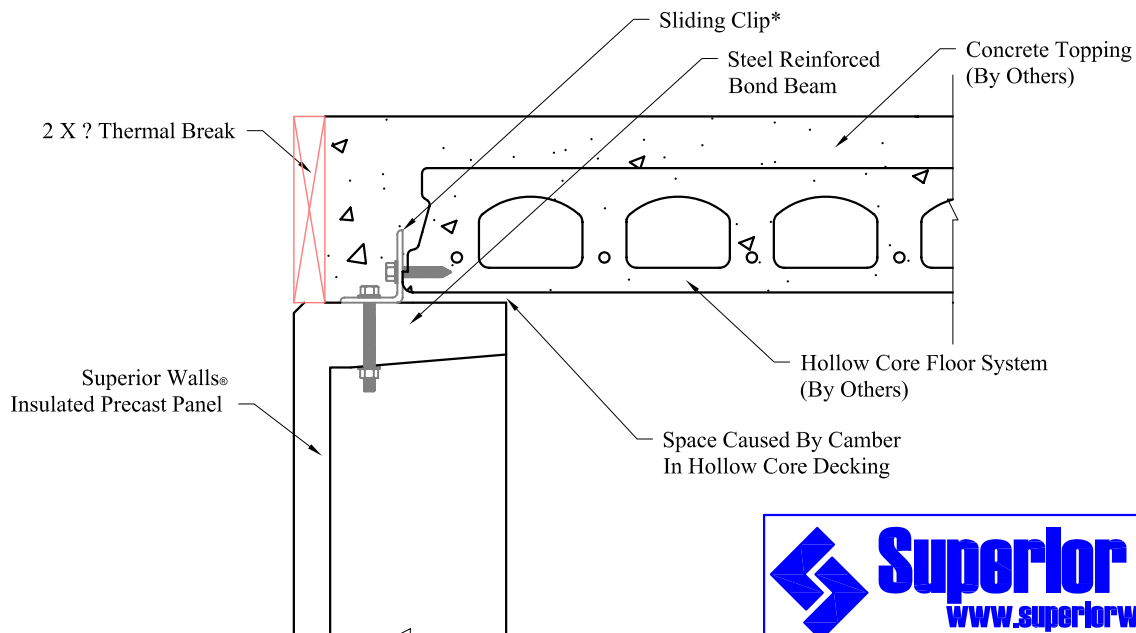
Attaching Hollow Core Decking To Superior Walls® Precast Panel

NOTE: Details Are For Concept Only. Applications Involving Hollow Core Decking/Plank Used With Superior Walls® Precast Panels Must Be Reviewed By A Professional Engineer.

Hollow core Perpendicular To Superior Walls® Precast Panel



Hollow Core Parallel To Superior Walls® Precast Panel



937 East Earl Road, New Holland, PA 17557
Phone: 800-452-9255 / Fax: 717-351-9263

* Sliding Clip Allows Vertical Movement Of Hollow core While Restraining Wall From Lateral Backfill Loads

NAME	DATE	PRODUCT LINE: R-5 And Xi	
DRAWING BY: NJEJ	07/20/07	DESCRIPTION: Attaching Hollow Core Decking	
COMMENTS:		SIZE A	DWG NO / PART NO: DP0078
		DRAWING SCALE: To Fit	PLOT SCALE: To Fit
			REVISION -
			SHEET: 1 of 1