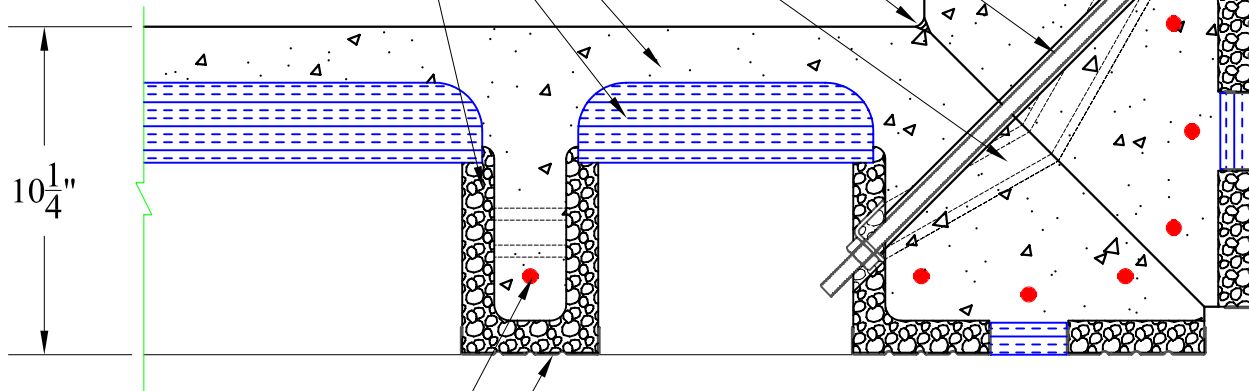


$\frac{1}{2}$ " Threaded Rod With  
 Bolting Clips And Nuts  
 Polyurethane Joint Sealant  
 EPS Chase For Wiring  
 And Plumbing  
 $1\frac{3}{4}$ " Concrete Face Shell  
 $2\frac{1}{2}$ " XPS Insulation  
 1" EPS Stud Insulation



Vertical #4 Rebar  
 (Inside Each Stud)  
 Galvanized  
 Steel Stud Facing



937 East Earl Road, New Holland, PA 17557  
 Phone: 800-452-9255 / Fax: 717-351-9263

NAME		DATE	PRODUCT LINE: Xi		
DRAWING BY: NJEI		12/08/05	DESCRIPTION: 45 Degree Inside Corner		
COMMENTS: Rev: 10/17/07 (2 3/8" Insul.)			SIZE A	DWG NO / PART NO: DP0030	REVISION 01
			DRAWING SCALE: 0'-2" = 1'-0"	PLOT SCALE: 1:6	SHEET: 1 of 1