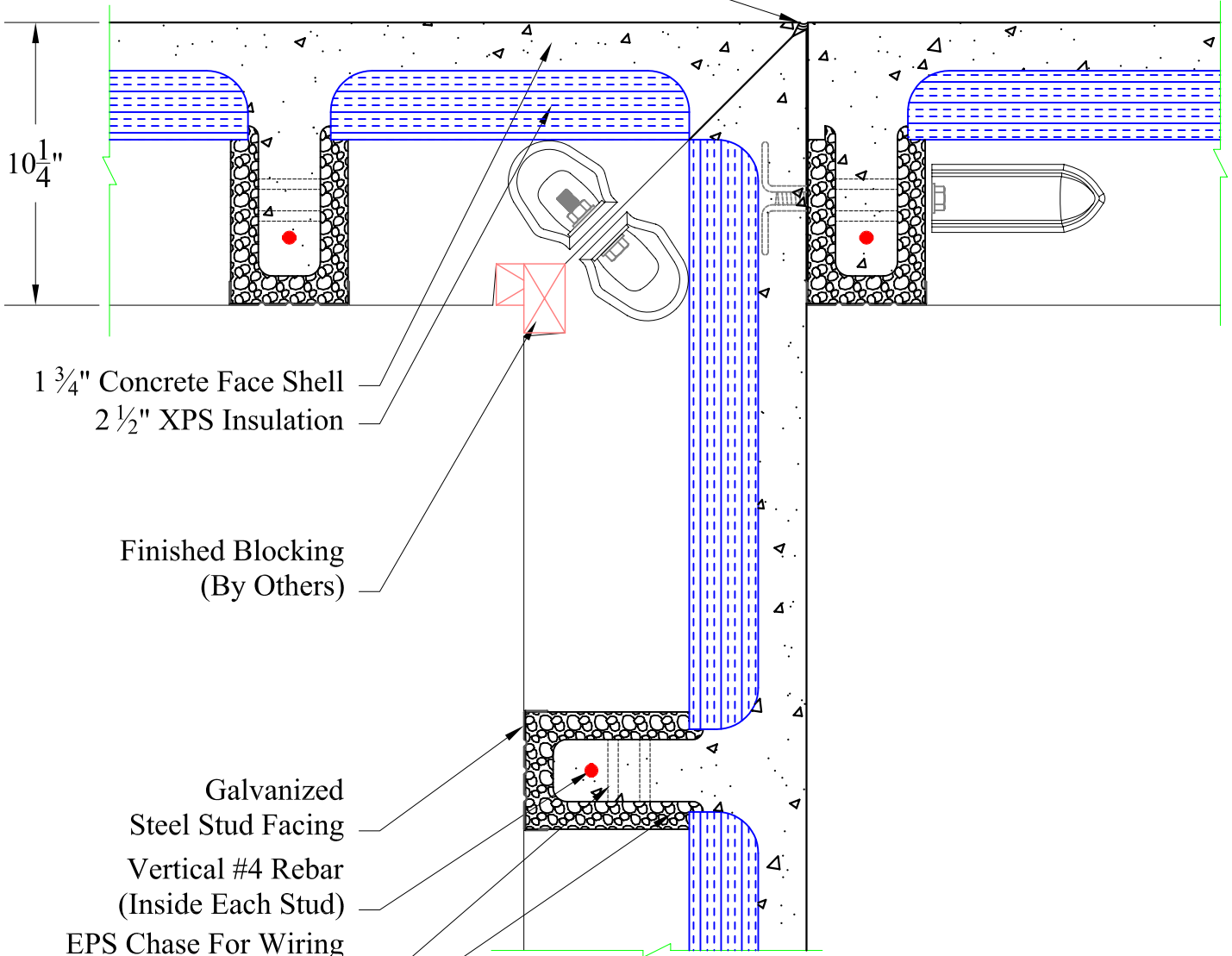


Polyurethane Joint Sealant



1 3/4" Concrete Face Shell
2 1/2" XPS Insulation

Finished Blocking
(By Others)

Galvanized
Steel Stud Facing
Vertical #4 Rebar
(Inside Each Stud)
EPS Chase For Wiring
And Plumbing
1" EPS Stud Insulation



937 East Earl Road, New Holland, PA 17557
Phone: 800-452-9255 / Fax: 717-351-9263

	NAME	DATE	PRODUCT LINE: Xi	
DRAWING BY:	NJEI	08/09/05	DESCRIPTION: Butt Joint To A 90 Degree Outside Corner	
COMMENTS:	SIZE	DWG NO / PART NO:		REVISION
	A	DP0019		-
DRAWING SCALE: 0'-2"=1'-0"		PLOT SCALE: 1:6		SHEET: 1 of 1